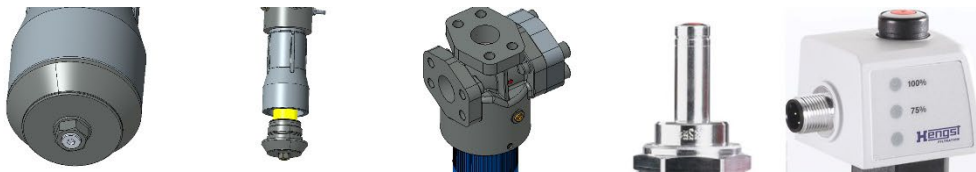




Inline filters are used in hydraulic systems for separating solid materials from the hydraulic fluids and lubricating oils. They are intended for attachment in pipelines.

Your product advantages: 245LEN, 350LEN und 445LEN



- Cyclone effect
- Only 350, 445 NG0630 (split filter bowl on request) standard from NG1000 upwards (simplified maintenance)
- Drain plug from NG0160
- Optical maintenance indicators
- Opional hydraulic connections with UNF threads
- Only 445 LEN top outlet optional (outlet closed opposite)
- Additional screw couplings G1/4, lateral only for NG0160 - 1000