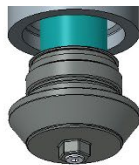
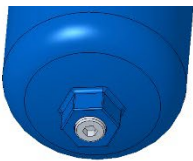




Block mounting filters are suitable for direct mounting on pump blocks and manifolds. They are installed upstream of control units or controllers that are to be protected.

Your product advantages: 450 PBF



- Drain plug from NG 0160
- Only 450 NG 0630 (split filter bowl on request) and 1000 standard split filter bowl for simplified maintenance
- Optional test ports from NG 0160
- Optical maintenance indicator standard for all series (connection up to NW40 for size 630 and 1000)